



Middle Tennessee Electric

Service Line Clearance

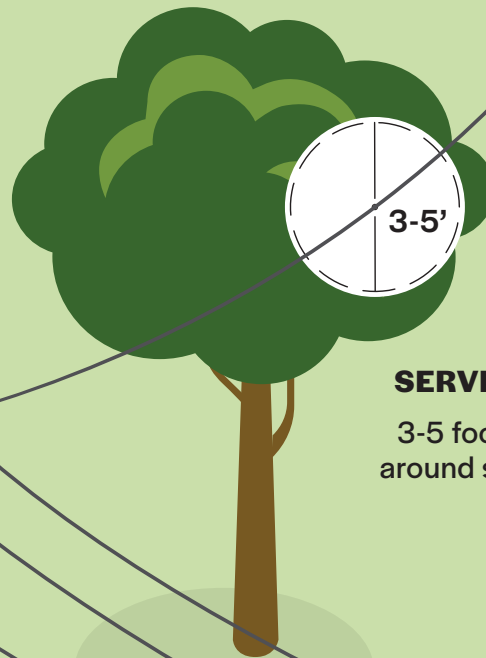
Middle Tennessee Electric is responsible for delivering safe and reliable electricity to our members. To keep you safe and your service uninterrupted, MTE's vegetation management team prunes trees and vegetation around your service line once every six years. This is done to prevent outages or power disruptions before they happen.

Service lines are connected to your home through equipment called a weather head. The weather head then directs electricity down to your meter. Members are responsible for the maintenance and upkeep of their weather head and the base where our meter is attached.

To help prevent damage to your service line and equipment on your home, we maintain a 3-5 foot clearance around it. This ensures safe and reliable electricity, while also preserving the integrity of any equipment. If your tree is marked for pruning it means that there is vegetation encroaching this clearance window.

The best option for maintaining this clearance is to plant low-growing trees and vegetation near your service line. Consider how tall your plant will become when it is fully mature.

If you plan to prune around service lines attached to your home, do not come into contact with your service line. We strongly suggest pruning your vegetation further than 5 feet from the service line. We also recommend you contact MTE to have the service line temporarily disconnected from your home if you are pruning within 10 feet of your service line to ensure your safety.



SERVICE TRIM

3-5 foot window
around service line

If you have questions about trees, vegetation, or about the environment related to the rights-of-way or Middle Tennessee Electric, our team of certified arborists are available to help. For questions or concerns, please call **877-414-7685** or send us an email at **VegetationManagement@mtmc.com**.

Learn more about our vegetation management team at **[MTEMC.com/VegetationManagement](https://www.MTEMC.com/VegetationManagement)**.