

REQUEST FOR BID (RFB)

JOINT USE POLE ATTACHMENT INVENTORY SERVICES



Title:	ENG - Joint Use Pole Attachment Inventory Services
Open Date:	May 1, 2025
Close Date:	May 31, 2025
Close Time:	Close of Business Day
Contact:	Distribution Asset Managers Brian Parker E: BrianParker@mte.com O: 615-494-1568

TYPE OF SERVICE:

Middle Tennessee Electric Membership Corporation (MTE) is soliciting bids for Joint Use Pole Attachment Inventory Services.

Scope of Work:

The following services are expected to be performed and completed upon conclusion of field inspections:

Option A – Core Services

1. Update existing GIS records to accurately reflect field conditions for all communication company attachments, including the number of cables affixed to poles and their respective positions.
2. Notify MTE of unmapped attachments that are present in the field and require the creation of new GIS records.
3. Notify MTE of mapped attachments that are not present in the field and require deletion of existing GIS records.
4. Identify locations with unauthorized attachments on MTE poles.
5. Identify MTE poles with additional power entities attached.
6. Identify discrepancies in pole mapping, including poles that are listed in GIS records but not found in the field, or vice versa.
7. Identify clean pole stubs designated for removal and verify whether they have been appropriately tagged (liability tagged as Phone, CATV, or Fiber poles).
8. Identify any incomplete pole transfers and determine the parties responsible for completion.
9. Identify any power supply boxes and meter entrances attached to decommissioned poles that require transfer.
10. Identify locations where pole ownership is incorrectly tagged or where no tag is present, particularly when phone services have been relocated, leaving MTE attached to the original pole.

11. Document any hazards requiring immediate attention or locations where MTE should conduct a field visit, providing detailed reasons for the visit.

Option B – Additional Services (Security Light Field Verification)

Includes all services from Option A, with the addition of Security Light Field Verification:

1. At each location visited for Option A, verify the presence or absence of security lights, and, where present in field and/or GIS, mark the light inspection status 'Yes' to document visit.
2. Confirm that the light units correspond accurately with the GIS records.
3. Update any discrepancies between installed light units and GIS records.
4. Verify light identification numbers or document their absence where applicable.
5. Identify any lights present in the field that are not reflected in GIS records and enter in app.
6. Identify lights listed in GIS records but absent from the field and document in comments.
7. Record any issues related to lights (e.g., damage, malfunction, day burning) in the appropriate comments section.
8. Document the direction in which the light is oriented (e.g., facing house, street, barn, or specific address) in the comments.

Option C – Additional Services (Pole Tag Verification)

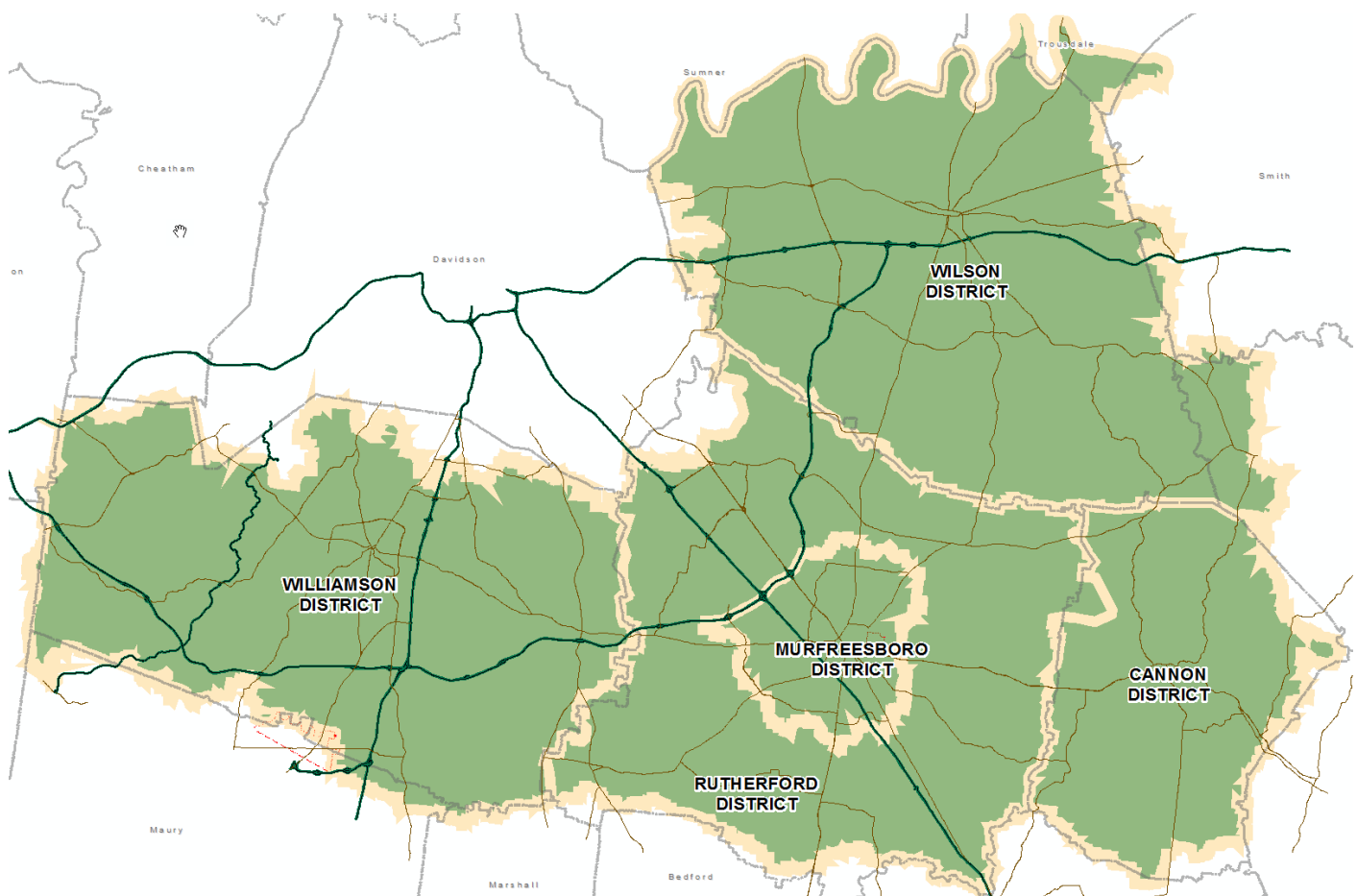
Includes all services from Option A, with the addition of Pole Tag Verification:

1. Install pole number identification tags on all wooden poles lacking assigned numbers (excluding member owned poles).
2. Record new tag number in application to reflect the new tag installation.

Project Overview:

The scope of the project encompasses the entire MTE service area, which includes approximately 176,593 poles. The work will be conducted in districts, as follows:

- 2025: Murfreesboro District (~17,490 poles)
- 2026: Rutherford District (~46,037 poles)
- 2027: Wilson District (~57,862 poles)
- 2028: Williamson District (~41,766 poles)
- 2029: Woodbury District (~13,392 poles)



MTE will provide contractors with access to the ESRI field maps application, preloaded with GIS data relevant to the project. Contractors may be required to supply their own hardware.

Terms and Conditions: The selected vendor will be required to enter into a contract that includes MTE's standard terms and conditions.

Insurance Requirements:

The selected vendor shall be responsible for providing workers' compensation, property damage, public liability, and cyber liability insurance, ensuring coverage for the entire duration of the project in accordance with the minimum insurance requirements set forth by MTE.

Proposed Pricing Request:

Please provide the following proposed pricing details:

1. Joint Use Make Ready Services:

- **Field Survey Cost per Pole** for each year in the upcoming cycle:

- **Option A:**

- 2025 (~17,490 poles): _____
- 2026 (~46,037 poles): _____
- 2027 (~57,862 poles): _____
- 2028 (~41,766 poles): _____
- 2029 (~13,392 poles): _____

- **Option B Add-On (Security Light Verification):**

- 2025 (~313 lights): _____
- 2026 (~3,740 lights): _____
- 2027 (~8,462 lights): _____
- 2028 (~3,667 lights): _____
- 2029 (no light inventory required): _____

- **Option C Add-On (Pole Tag Verification):**

- 2025 (~2,359 poles): _____
- 2026 (~25,745 poles): _____
- 2027 (~43,698 poles): _____
- 2028 (~26,179 poles): _____
- 2029 (~7,553 poles): _____

Name of firm:	
Name of Preparer:	

Title:	
Date:	

Submission Instructions:

Please submit your bid by the due date via email to **BrianParker@mte.com**. You may use this form to email your bid. Please provide any additional details or clarifications regarding the proposed pricing.